

7358 Beverly Blvd

Los Angeles, CA 90036

t. 323.936.7020 | f. 323.936.7454

info@artspacewarehouse.com | www.artspacewarehouse.com

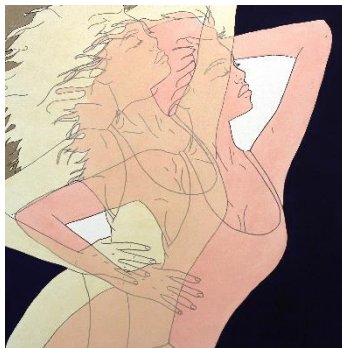
Mon - Sat 10am - 6pm | Sun 12 - 6pm



## HILARY BOND

Hilary Bond was born and raised in Baltimore, Maryland. She received a BFA from the Cooper Union for the Advancement of Science and Art and an MFA from the San Francisco Art Institute.

Citing Andy Warhol, Willem de Kooning, and Egon Schiele as influences, she creates bold depictions of strong women. Through these images of women, Bond explores contemporary femininity as well as the concept of the artists' "muse" and how it relates to female identity.



The artist began painting models like Kate Moss in her exploration of the "ideal" female and relates her images of women to Edouard Manet's "Olympia." Her bold color palette and thick black outlining emphasizes female strength and assertiveness and confronts the idea that women must be quiet and submissive.

Hilary Bond's work has been exhibited All over the country in group and solo exhibitions. Her work has been featured on television in CBS's "Two Broke Girls."

### SOLO SHOWS

- 2011 EM&Co, Los Angeles, CA
- 2010 Rennee's, Santa Monica
- 2009 Coma Alternative Space, Los Angeles
- 2007 Red Canoe, Baltimore, MD
- 2006 Whitemarsh Dance Academy, Whitemarsh, MD



### GROUP SHOWS

- |      |  |      |  |
|------|--|------|--|
| 2019 | "Something Vague," Artspace Warehouse, Los Angeles, CA | 2009 | Cannibal Flower                                |
| 2017 | The Invisible Gallery, San Francisco, CA               | 2008 | Los Angeles Friendship Center, Los Angeles, CA |
| 2017 | SFAI MFA Open Studios, San Francisco, CA               | 2007 | Apex Art, New York, NY                         |
| 2017 | The Pacific Wall, Schillerpalais, Berlin, Germany      | 2007 | The Cooper Union, New York, NY                 |
| 2014 | LA Art Share, Los Angeles, CA                          | 2004 | The Walter's Art Gallery, Baltimore, MD        |
| 2014 | Cause Gallery, Los Angeles, CA                         |      |  |
| 2014 | Artspace Warehouse, Los Angeles, CA                    |      |  |
| 2012 | Artspace Warehouse, Los Angeles, CA                    |      |  |
| 2011 | Kunstwarehaus, Zurich, Switzerland                     |      |  |
| 2010 | Give Canvas Gallery, Los Angeles, CA                   |      |  |
| 2010 | GCS Gallery, Santa Ana, CA                             |      |  |
| 2010 | New Puppy Gallery, Eagle Rock, CA                      |      |  |

### ART FAIRS

- 2014 Red Dot Art Fair Miami, FL
- 2014 Affordable Art Fair New York, NY
- 2013 Affordable Art Fair Seattle, WA
- 2012 Affordable Art Fair Los Angeles, CA

Artspace Warehouse is one of the world's **leading galleries for savvy contemporary art collectors**. With galleries in Zurich and Los Angeles, Artspace Warehouse specializes in **guilt-free international urban, figurative, pop, graffiti and abstract art**.

7358 Beverly Blvd

Los Angeles, CA 90036

t. 323.936.7020 | f. 323.936.7454

info@artspacewarehouse.com | www.artspacewarehouse.com

Mon - Sat 10am - 6pm | Sun 12 - 6pm



Artspace Warehouse is one of the world's **leading galleries for savvy contemporary art collectors**. With galleries in Zurich and Los Angeles, Artspace Warehouse specializes in guilt-free international urban, figurative, pop, graffiti and abstract art.